

THE ANCHORLESS CORING SYSTEM



EXCO

www.ExcoKwikCore.com

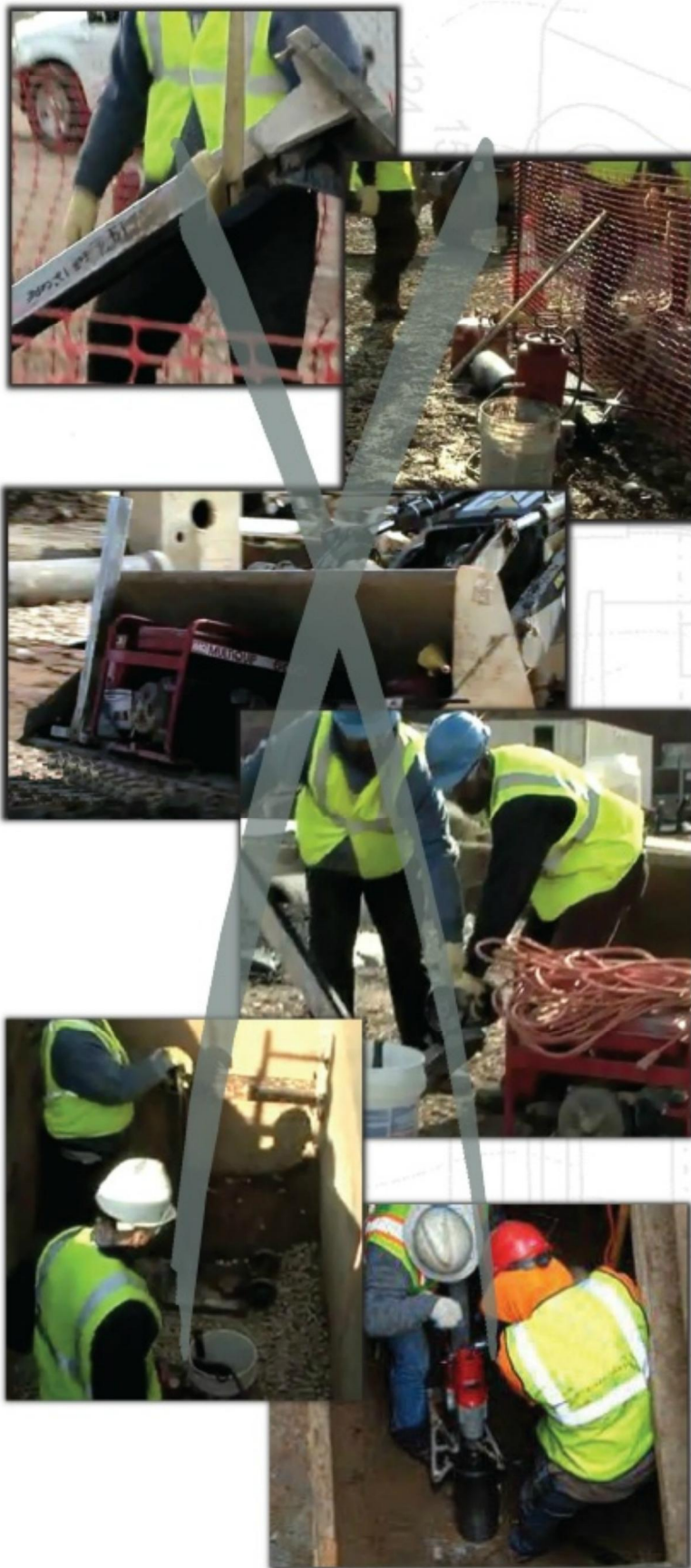
KWIKCORE™
ANCHORLESS CORING SYSTEM

1-85KWIKCORE

1 - 8 5 5 - 9 4 5 - 2 6 7 3

US PATENT # 8,167,519 * OTHER PATENTS PENDING

NO MORE OF THIS



Compare

KwikCore Traditional

Labor needed for setup and operation	1	3
Cores that can be drilled per day	14 - 28	2 - 4
Reduces exposure to hazards of silica dust	Yes	No
Reduces labor cost and labor fatigue	Yes	No
Eliminates hazards with manual lifting	Yes	No
Remote controlled coring device	Yes	No
Coring in virtually any position	Yes	No

Applications

Underground Sewer Connections
 Reinforced Concrete Slabs
 Walls and Bridge Decks
 Sanitary, Storm, Electrical,
 Vaults and Utility Structures
 Bollard, Sign Post and Fence Post
 Any Core Drill Application

Ground Level

Below Ground Level

Above Ground Level

and Any Position

including 45 Degree

Angle with

NO ANCHORING

4 - Traditional Cores Per Day or 4 - KwikCores Per Hour - Backhoe - Skid Steer Loader - Mini Track Loader - Compact Track Loader - Compact Excavator - Excavator

No more failed anchoring - No more workers in the trenches - No more headaches just use KwikCore!

About KwikCore

The BEGINNING 2010...MECO Constructors, Inc. was faced with the challenge of creating over 900 concrete openings for a new housing development in Philadelphia, Pennsylvania. The new infrastructure was designed to accommodate the Philadelphia Water Department's "piggyback" system. Andrew & Peter Ebert owners of MECO "With so many holes to core drill in 15' deep excavations, and coring methods would have created enormous costs, added explained Fred Engel and Ed Lounsberry, site project use of the existing underground lines and install new between 6"-14" in diameter through piping between trenches with limited access and through thick concrete develop a new anchorless coring system that was cost operators. Using KwikCore, one operator was able to create this particular phase of the overall project well within the allotted schedule and saved over \$1 million dollars on the project. Partnering with some of the top companies in the industry to ensure only the highest quality product and usefulness in the field...KwikCore was born.



into sewers encased in concrete, we calculate that traditional time and there are major concerns about operator safety," managers of EXCO and inventors of KwikCore. To make piggyback system, 900 holes were required measuring 8"-15" thick. In all cases, the holes were made in deep encased piping. It was at this point that they began to effective, portable, remotely controlled and safe for the over 30 core holes every eight-hour shift. EXCO completed



Serviced and Supported By
DITEQ, SHIBUYA & EXCO

The unique blend of Diteq, Shibuya and KwikCore's Anchorless Coring Technology, provides the ultimate combination of research, design, production, and job site expertise. DITEQ Diamond Tools, SHIBUYA Core Drilling Machines, and EXCO KwikCore Attachments, together have crafted solutions that can make client's projects safer, easier, faster and better.



"Simplicity is the ultimate sophistication." - Leonardo da Vinci



"Advanced Drainage Systems is the leading manufacturer of high performance thermoplastic corrugated pipe, with more than 9 billion feet of pipe currently in service around the globe."



Benefits

- Can connect to the largest range of sizes in the industry.
- High performance connections are watertight, air testable & durable.
- Installs without disturbing bedding and there is no need for glue.
- Installation is easy and affordable.

Inserta Tee and Inserta Wye are three piece service connections consisting of a PVC hub, rubber sleeve and stainless steel band. Inserta Tee connections range from 2" - 30" service laterals and the Inserta Wye connections are designed to connect to 4" & 6" laterals to solid wall pipe, profile, closed profile, corrugated pipe and manhole structures.

KwikCore can accommodate all Inserta Tee & Inserta Wye Bit Sizes including a 45 Degree Foot Attachment.



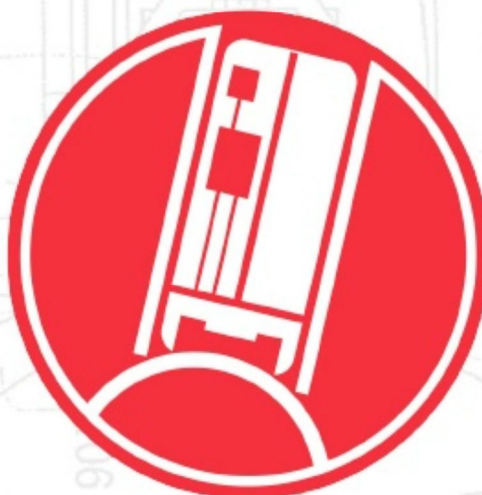
For More Info

- www.ads-pipe.com
 - www.insertatee.com
 - Customer Sales: (503) 357-2110
- Inserta Tees & Wyes are unique. We target the tap (tell us what lateral line you want to connect to what mainline). Seals the hole not just the surface.*

One Tool - One Operator

**Proven to Reduce Labor by 67%
and Increase Productivity by 700%**

**Minimum Training
Minimum Maintenance**



**Increased Efficiency
No Set-Up
Enhanced Safety
Remotely Controlled
Multiple Applications**

KC16 - Electric

THE ANCHORLESS CORING SYSTEM



EXCO

www.ExcoKwikCore.com



KWIKCORE™
ANCHORLESS CORING SYSTEM

1-85KWIKCORE
1-855-945-2673

US PATENT # 8,167,519 * OTHER PATENTS PENDING

KC16 - Electric

Maximum Bit O.D. Size 16 Inches

NO MORE OF THIS



The motor ventilation system is designed to prevent water from flowing inside the motor with effective air cooling capacity.



1:1 direct gear and
1:2.4 reduction gear shaft.

Specifications

Length without mounting bracket on top	50.50"	1.28 m
Length with mounting bracket on top	56.50"	1.44 m
Width with mounting bracket on top	20.50"	.52 m
Width with mounting bracket on side	26.50"	.67 m
Width of the connection caddy side	25.00"	.63 m
Pin centers on mounting bracket	11.50"	.29 m
Maximum diameter drill bit	16.00"	.41 m
Weight of Unit without bit	490 lbs.	222 kg
Weight of remote control box	20 lbs.	9 kg
Travel of carriage	24.00"	.61 m
Length of umbilical cord	50.00'	15.24 m
Length of power cord	20.00'	6.10 m
Water Supply Female Garden Connection	3/4"	.02 m
Power supply - single phase	115 volts/5000 watts	

KwikCore® works with all types of material. Shown here are RCP, Clay and SaniTite® HP from ADS. Also shown here is the installed Inserta Tee® product utilizing a Diteq Wet Core and Hole Saw Bit.



Applications

- Underground Sewer Connections
- Reinforced Concrete Slabs
- Walls and Bridge Decks
- Sanitary, Storm, Electrical, Vaults and Utility Structures
- Bollard, Sign Post and Fence Post
- Any Core Drill Application Including 45°

Compare

	KwikCore	Traditional
Labor needed for setup and operation	1	3
Cores that can be drilled per day	14 - 28	2 - 4
Reduces exposure to hazards of silica dust	Yes	No
Reduces labor cost and labor fatigue	Yes	No
Eliminates hazards with manual lifting	Yes	No
Remote controlled coring device	Yes	No
Coring in virtually any position	Yes	No

684 Dunksferry Road, Bensalem, PA 19020

1-85KWIKCORE

1-855-945-2673

www.ExcoKwikCore.com



Visit Our Website

REQUEST A WEB DEMO TODAY!



KC34 - Electric

THE ANCHORLESS CORING SYSTEM



US PATENT # 8,167,519 * OTHER PATENTS PENDING

1-85KWIKCORE

1-855-945-2673

EXCO

www.ExcoKwikCore.com

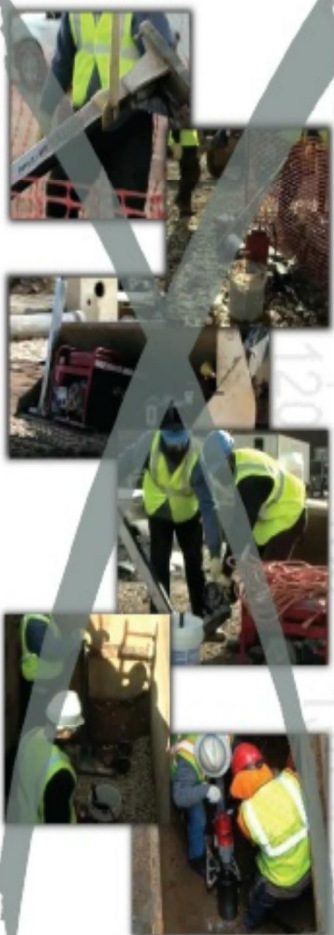


KWIKCORE™
ANCHORLESS CORING SYSTEM

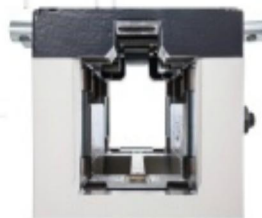
KC34 - Electric

Maximum Bit O.D. Size 34 Inches

NO MORE OF THIS



Drill Motor shown here in the KwikCore Unit.



Four-sided roller carriage for smooth and stable drilling.

Specifications

Length without mounting bracket on top	50.50"	1.28 m
Length with mounting bracket on top	56.50"	1.44 m
Width with mounting bracket on top	20.50"	.52 m
Width with mounting bracket on side	26.50"	.67 m
Width of the connection caddy side	25.00"	.63 m
Pin centers on mounting bracket	11.50"	.29 m
Maximum diameter drill bit	34.00"	.86 m
Weight of Unit without bit	550 lbs.	250 kg
Weight of remote control box	20 lbs.	9 kg
Travel of carriage	24.00"	.61 m
Length of umbilical cord	50.00'	15.24 m
Length of power cord	20.00'	6.10 m
Water Supply Female Garden Connection	3/4"	.02 m
Power supply - single phase	115 volts/5000 watts	

KwikCore[®] on a job site in California with an extension cage to accommodate a 15" and a 30" Inserta Tee[®] application.



Applications

- Underground Sewer Connections
- Reinforced Concrete Slabs
- Walls and Bridge Decks
- Sanitary, Storm, Electrical, Vaults and Utility Structures
- Bollard, Sign Post and Fence Post
- Any Core Drill Application Including 45°

Compare

	KwikCore	Traditional
Labor needed for setup and operation	1	3
Cores that can be drilled per day	14 - 28	2 - 4
Reduces exposure to hazards of silica dust	Yes	No
Reduces labor cost and labor fatigue	Yes	No
Eliminates hazards with manual lifting	Yes	No
Remote controlled coring device	Yes	No
Coring in virtually any position	Yes	No

684 Dunksferry Road, Bensalem, PA 19020

1-85KWIKCORE

1-855-945-2673

www.ExcoKwikCore.com



Visit QR Website

REQUEST A WEB DEMO TODAY!



4 - Traditional Cores Per Day or 4 - KwikCores Per Hour - Backhoe - Skid Steer Loader - Mini Track Loader - Compact Track Loader - Compact Excavator - Excavator

KCH - Hydraulic

THE ANCHORLESS CORING SYSTEM



EXCO

www.ExcoKwikCore.com

KWIKCORE™
ANCHORLESS CORING SYSTEM

1-85KWIKCORE

1-855-945-2673

US PATENT # 8,167,519 * OTHER PATENTS PENDING

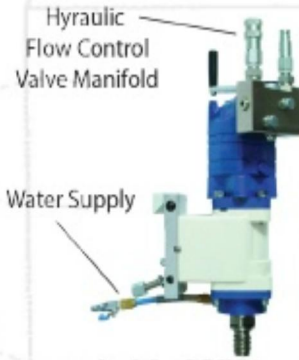
KCH - Hydraulic

Larger Sizes
are Available

Standard Max. Bit O.D. Size 34 Inches

Contact your
Sales Rep

NO MORE OF THIS



Connection Caddy is conveniently located and rides with the travel of the carriage for the Power, Remote Control, Hydraulics and Water.

Specifications

Length without mounting bracket on top	50.50"	1.28 m
Length with mounting bracket on top	56.50"	1.44 m
Width with mounting bracket on top	20.50"	.52 m
Width with mounting bracket on side	26.50"	.67 m
Width of the connection caddy side	25.00"	.63 m
Pin centers on mounting bracket	11.50"	.29 m
Maximum diameter drill bit	34.00"	.86 m
Weight of Unit without bit	550 lbs.	250 kg
Weight of remote control box	20 lbs.	9 kg
Travel of carriage	24.00"	.61 m
Length of umbilical cord	50.00'	15.24 m
Length of power cord	20.00'	6.10 m
Hydraulic Hose Connections	5/8"	.16 m
Water Supply Female Garden Connection	3/4"	.02 m
Power supply - single phase	115 volts/100 watts	

Applications

- Underground Sewer Connections
- Reinforced Concrete Slabs
- Walls and Bridge Decks
- Sanitary, Storm, Electrical, Vaults and Utility Structures
- Bollard, Sign Post and Fence Post
- Any Core Drill Application Including 45°

Compare

	KwikCore	Traditional
Labor needed for setup and operation	1	3
Cores that can be drilled per day	14 - 28	2 - 4
Reduces exposure to hazards of silica dust	Yes	No
Reduces labor cost and labor fatigue	Yes	No
Eliminates hazards with manual lifting	Yes	No
Remote controlled coring device	Yes	No
Coring in virtually any position	Yes	No



15 Feet Deep - Coring Completed in 20 Minutes.



30 Inch Core into a 6 Foot Main Brick Sewer System

684 Dunksferry Road, Bensalem, PA 19020

1-85KWIKCORE

1-855-945-2673

www.ExcoKwikCore.com



Visit Our Website

REQUEST A WEB DEMO TODAY!



4 - Traditional Cores Per Day or 4 - KwikCores Per Hour - Backhoe - Skid Steer Loader - Mini Track Loader - Compact Track Loader - Compact Excavator - Excavator

No more failed anchoring - No more workers in the trenches - No more headaches just use KwikCore!

Optional Items

THE ANCHORLESS CORING SYSTEM



EXCO

www.ExcoKwikCore.com

KWIKCORE™
ANCHORLESS CORING SYSTEM

1-85KWIKCORE

1-855-945-2673

US PATENT # 8,167,519 * OTHER PATENTS PENDING

Optional Items

See website for full product details - www.ExcoKwikCore.com

45° Degree Foot Assembly

Maximum Bit O.D. 16"

Cage Foot Assembly

This is to accommodate for Bit OD sizes over 16"
24" or 34" Cage is Included with KC34 or KCH

24" Depth
Custom Sizes Available.
Includes 24" Arbor Ext.

Diamond Wet Core Bits

DITEQ bits contain high concentrations of quality diamonds combined with a special blend of metal powders to deliver maximum performance with the lowest drilling costs.

Standard Sizes

Inserta Tee & Wye Sizes

2"	2 5/8"
3"	4 1/2"
4"	6 1/2"
5"	8 3/4"
6"	10 7/8"
7"	12 7/8"
8"	15 13/16"
9"	19 3/16"
10"	22 9/16"
11"	25 5/16"
12"	28 1/2"
13"	32 17/32"
14"	
16"	
18"	2 5/8"
20"	4 1/2"
24"	6 1/2"
26"	8 3/4"
30"	10 7/8"
36"	12 7/8"
	15 13/16"
	19 3/16"
	22 9/16"
	25 5/16"
	28 1/2"
	32 17/32"

Standard Sizes - 24" Depth

Inserta Sizes - 20" Depth

Hole Saw Sizes - 12" Depth

Other Sizes Available

Hole Saw Bits

2 5/8"
4 1/2"
6 1/2"
8 3/4"
10 7/8"
12 7/8"
15 13/16"
19 3/16"
22 9/16"
25 5/16"
28 1/2"
32 17/32"

Generators & Hydraulic Pumps

Multi-Duty Industrial Gensets

Subaru RGX6500

Subaru RGX7500

Hydraulic Power Packs

B & S Vanguard 16HP Gas

5 or 8 gpm @ 2000-2500 psi

B & S Vanguard 15HP Electric

0 - 12 gpm @ 1750/2000/2500 psi

Water Tanks

3 Gallon Hand Pump Tank

25 Gallon Cab Mounted Tank

55 Gallon Cab Mounted Tank

Replacement Parts

KC16 Motor

KC34 Motor

KCH Motor

Transmission

Remote Control Box w/Umbilical Cord

Mounting Bracket w/Bushings and Pins

Stainless Steel Panel Any Side

Connections Caddy w/Fittings

Set of 12 Feet w/Hardware

MSRP - KwikCore Units

KC16 \$24,995.00 - KC34 \$29,995.00 - KCH \$34,995.00

684 Dunksferry Road, Bensalem, PA 19020

1-85KWIKCORE

1-855-945-2673

www.ExcoKwikCore.com



VSIEDal 10/2016

**REQUEST A WEB
DEMO TODAY!**



4 - Traditional Cores Per Day or 4 - KwikCores Per Hour - Backhoe - Skid Steer Loader - Mini Track Loader - Compact Track Loader - Compact Excavator - Excavator

No more failed anchoring - No more workers in the trenches - No more headaches just use KwikCore!



EXCO

www.ExcoKwikCore.com

KWIKCORE™

ANCHORLESS CORING SYSTEM



REQUEST A WEB DEMO TODAY!



EXCO, INC.

**684 Dunksferry Road
Bensalem, PA 19020**

1-85KWIKCORE



US PATENT # 8,167,519 * OTHER PATENTS PENDING